

Innovative and Culturally Based Approaches to Tribal Law Enforcement Intervention and Prevention

July 30, 2024

Brian Dubray – Chief of Police

Robert Snyder – Community Services Officer

**Confederated Tribes of Coos, Lower Umpqua and
Siuslaw Indians Police Department**

Confederated Tribes of Coos, Lower Umpqua and Siuslaw Indians



TRIBAL POLICE OUTREACH PROGRAM (TPOP)

TPOP program establish with funding and support from the Oregon Criminal Justice Commission (CJC)



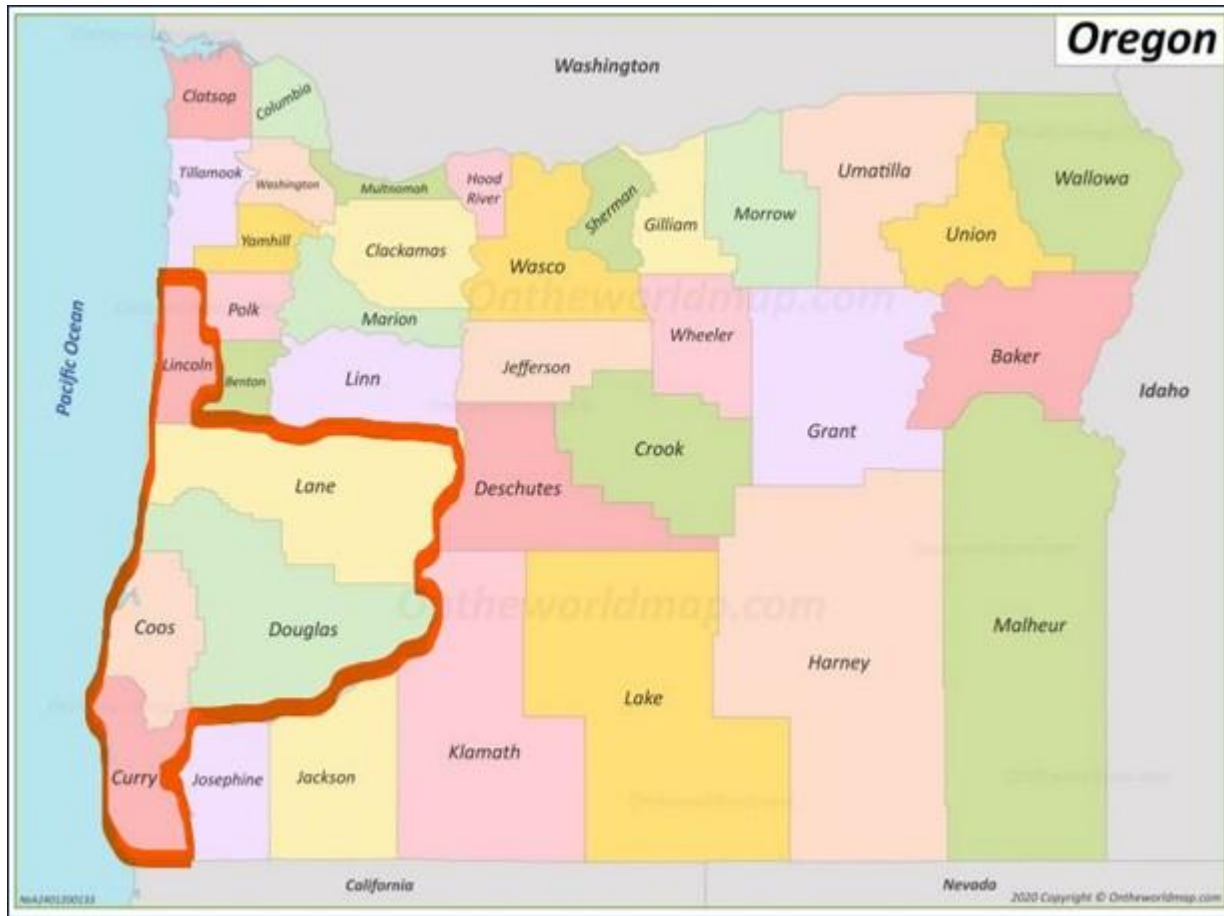
TPOP is supported by the State of Oregon's IMPACTS grant which the Oregon Criminal Justice Commission administers. The IMPACTS grant seeks to establish tribal-based and evidence-based programs to provide comprehensive community supports and services to a target population of individuals with frequent criminal justice and emergency services involvement. The overall aim of IMPACTS is to reduce the high utilization of the criminal justice system and emergency services, including institutional healthcare placements.

Learning Objectives

After this session, participants will be able to:

- Describe successes of Confederated Tribes of Coos, Lower Umpqua and Siuslaw Indians Tribal Law Enforcement programs
- Identify best practices that can be replicated in their communities
- Explain the importance and benefits of culturally based law enforcement interventions

CTCLUSI Service Area



- Federally Recognized Tribe in the State of Oregon
- 5-Counties (i.e. Coos, Curry, Douglas, Lane, Lincoln).
 - Spans more than 13,900 sq. miles
 - Area is larger than the states of Massachusetts, Connecticut, and Rhode Island combined
- Isolated and rural areas with several geographic barriers
- Limited access to public transportation services
- Limited cell phone access

Program Creation and Implementation

COVID-19 and Unanticipated Challenges

- Movement of population from urban settings to more rural and distant settings
- Limited ability to connect target population with social/BH service providers
 - Currently no certified drug and alcohol counselors
- Difficulty for social/BH service providers to:
 - Access/Meet target population
 - Perform “call-out” services

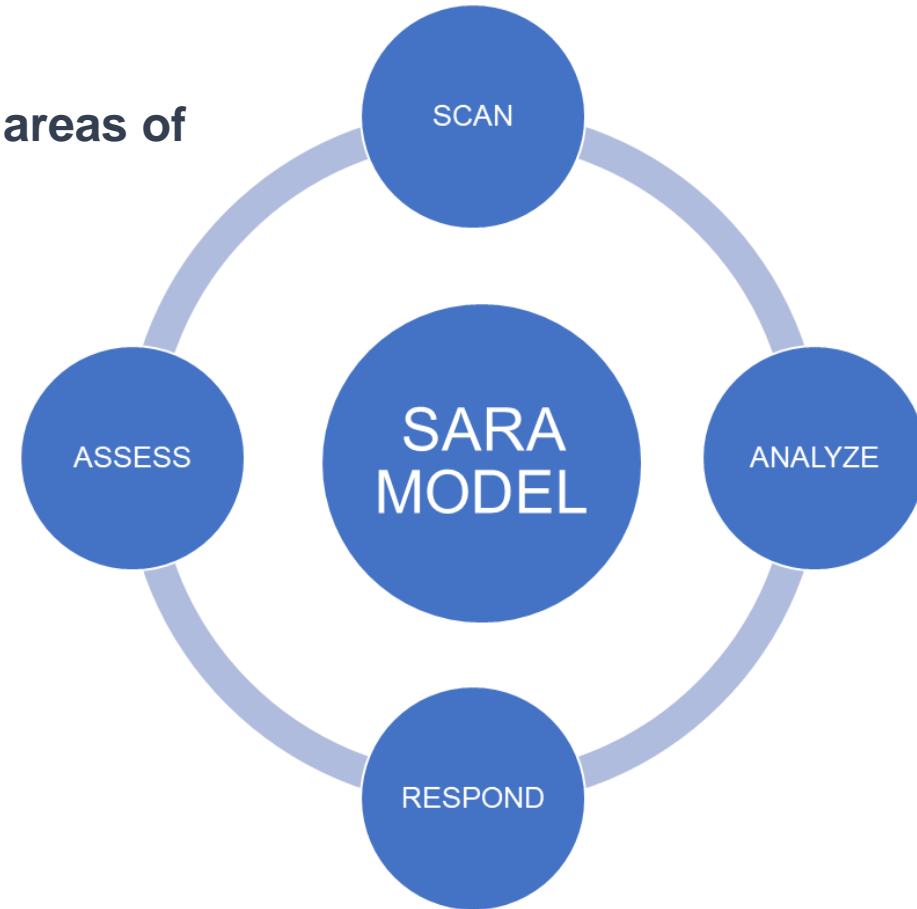
Other Funding Sources

- Review of grants and other available funding sources resulted in duplication of services/costs

Program Creation and Implementation

Problem-Oriented Policing

- Utilized SARA model to identify services gaps and areas of improvement to serve Tribal members

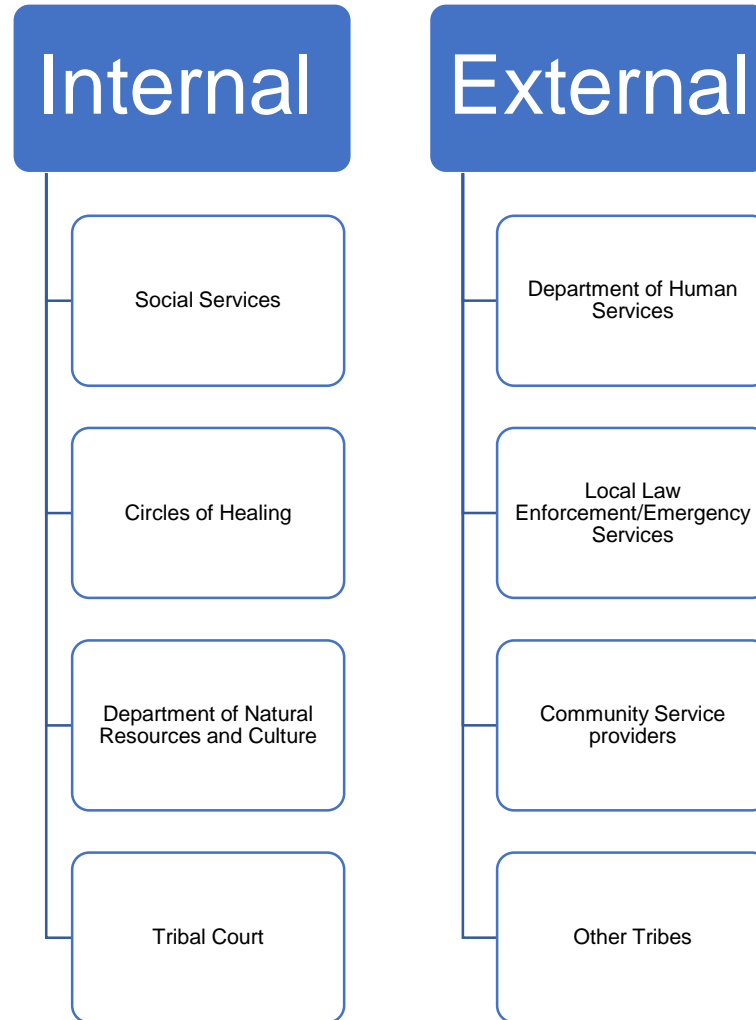


Community Services Officer

Program Goals:

- Identify high-risk and/or high-volume users of law enforcement and/or emergency medical services
- Provide support services with a priority on stabilization and treatment services
- Integrate into behavioral health and social services response
- Conduct follow-up contacts in the field to help identify gaps and barriers to services
- Act as liaison between the Tribe and external service providers

Focus on Collaborative Relationships



Culture is Prevention



Success Stories

“Paul”

- Tribal Member out of Wisconsin
- Diagnosed schizophrenic and bi-polar disorder
- Contacted Paul’s Tribe who located family who agreed to take him in
- Tribe agreed to pick him up from bus stop
- Drove Paul to the bus station and ensured departure

bike/trailer deal breaker

Semery



*Picture used with
permission*

Lessons Learned

Lessons Learned

- Obtain Tribal leadership buy-in and support
- Focus on qualitative results
- Identify internal and external partners initially
- Participate in Tribal and community activities/events

Questions?

Confederated Tribes of Coos, Lower Umpqua and Siuslaw Indians Police Department

Brian Dubray – Chief of Police

bdubray@ctclusi.org

Robert Snyder – Community Services Officer

rsnyder@ctclusi.org

